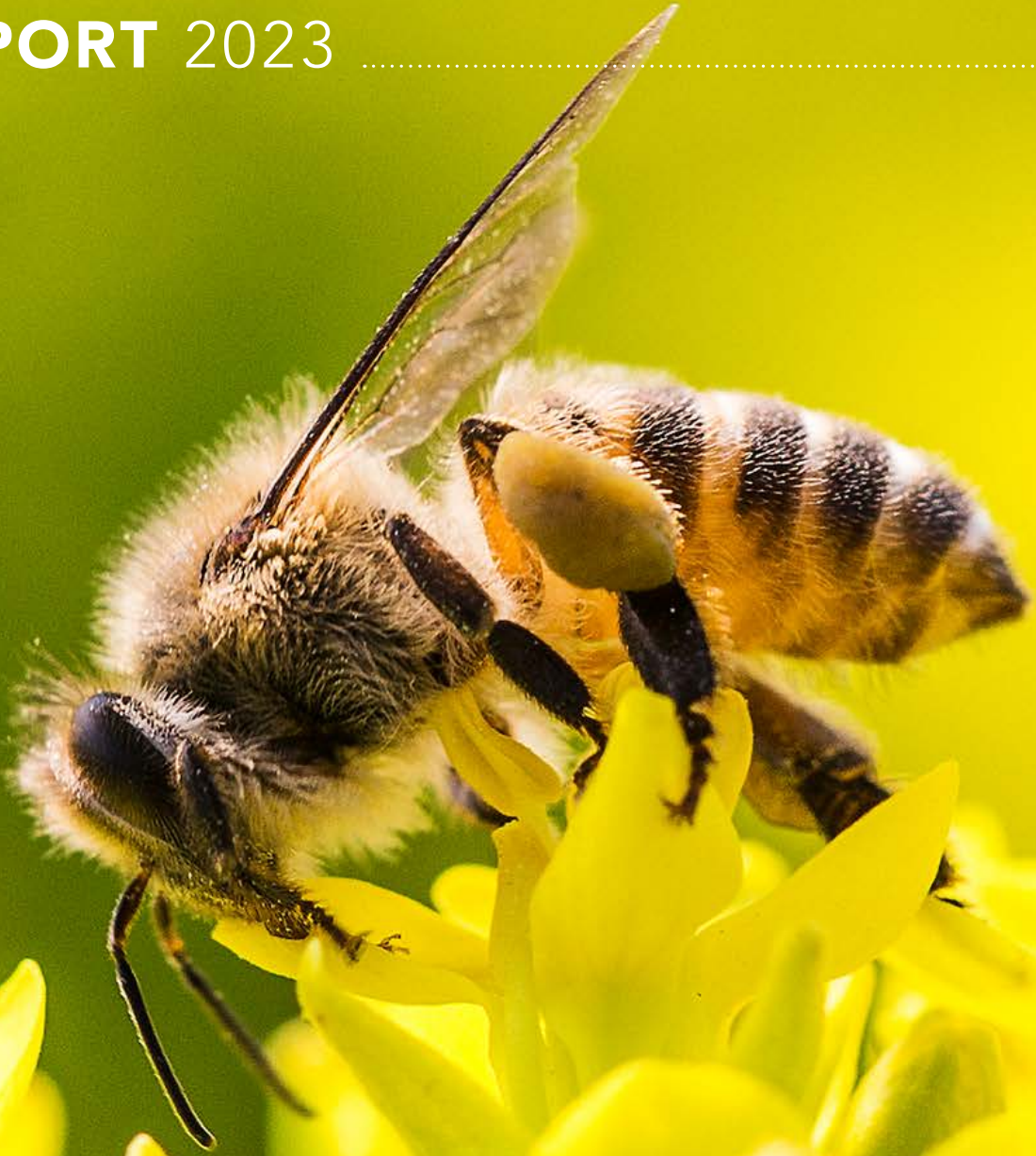


---

# IMPACT

REPORT 2023

---



# WE NEED BEES

..... *for* .....

FOOD SECURITY  
BIODIVERSITY  
ECOSYSTEM HEALTH



## A message from the CEO

Earlier this year, the When Bee Foundation unveiled its biggest exhibition site to date at the Melbourne International Flower and Garden Show. Based on the popularity of our display in 2022, we dramatically increased our range of displays to truly reflect the broad reach of the Foundation.

The site was part of the show's first Bug and Bloom Garden, a collaboration between the Nursery and Garden Industry Victoria, the Victorian Schools Garden Program and Agriculture Victoria. We had a massive team of volunteers on hand to talk all things bees. There were representatives from Bee School by Beechworth Honey who have partnered with us in our new education hub. We had representatives from our Powerful Pollinators program giving out our popular Planting Guides. Our Bee Ambassadors were there looking after our interactive bee hive, and Flow Hive was on site for backyard beekeepers. We had representatives available to speak to farmers about Bee Friendly Farming, and our first native bee habitat display. Dotted throughout the site were information banners on all our programs, including a banner highlighting our founder, Gretchen Wheen.

Over the show's five days, more than 108,000 people visited the show, including an estimated 3,000 students, all eager to learn about bees and the critical role they play in our lives. It was an inspiring event and a clear display of the organisation's increasing ability to reach more people. I know Gretchen would have been proud to see the work being done and the impact we are having across the community.

Along with our MIFGS exhibition, 2023 saw the launch of a number of new initiatives at the When Bee Foundation as we continue to build on our four main focuses of activity – research and development, awareness and education, connecting people and fundraising.

This year we launched the **Centre For Bee Education**, an online learning hub developed between the When Bee Foundation and Bee School by Beechworth Honey.

We launched a new community planting program and welcomed Carman's to the fold with the **Carman's Trees for Bees Community Tree Grants**, providing grants of up to \$500 for community groups to increase pollinator-friendly habitat.

This year also saw the publication of the **Discover Native Bees of Australia poster**, featuring 22 native bees in full colour, captured by photographer and entomologist Dr James Dorey. The poster was extremely popular and raised much-needed funds for the Discover Bees campaign.

Our Bee Friendly Farming program received a welcomed boost from the Australian Government's Future Drought Fund. The grant of \$480,000 will enable us to expand this program, with the goal to double the hectares under certification over the next two years.

Other programs were back after a successful launch in 2022, cementing themselves in our increasingly busy calendar.

During Australian Pollinator Week we held the second **Australian Pollinator Count**, calling on citizen scientists across the country to count the pollinators in their local area to increase our understanding of the number and diversity of pollinating insects in the environment.

We held the second annual **Pollinator Photography Competition**, attracting more than 500 entries from across all states and territories.

These projects joined our regular line-up of programs including Bee Friendly Farming, World Bee Day, our increasing range of Powerful Pollinator Planting Guides, our work as lead organisation of the Pollination Security CRC Bid, our Bee Ambassadors program, the Linton Briggs Advancing Apiculture Fund, and our expanding Business Buddies program.

We are proud of the work that we at the Foundation and our teams of volunteers have done over the past 12 months. We also know that it has set us on a path for continued growth over the coming years, and we look forward to the future and the impact we can have for the benefit of all bees.

**Fiona Chambers**  
CEO  
When Bee Foundation



**WHEN BEE**  
FOUNDATION

## HIGHLIGHTS AT A GLANCE:

# Our vital work supporting bees in 2023

# \$60m

The When Bee Foundation was the lead organisation for the Pollination Security CRC Core Bid Group, which attracted 55 partners and \$60 million in contributions, with the When Bee Foundation committed to contributing \$1.1 million over 10 years.

# \$50K

**WORLD BEE DAY:** \$50k investment so far as the Australian Secretariat.

# \$65K

### **COMMUNITY TREE GRANTS – CARMAN'S TREES FOR BEES:**

The Community Tree Grants was launched with \$65,000 from Carman's over three years to support community tree plantings for pollinators.

# 92ha

### **BEE FRIENDLY FARMING TREE GRANTS:**

The Bee Friendly Farming Tree Grants have awarded \$65,000 in tree grants in its first two years, planting more than 92ha of pollinator-friendly habitat.

# \$30K

**AUSTRALIAN POLLINATOR WEEK:**  
\$30k investment so far as Secretariat.

# \$257K

When Bee Foundation has partnered with Federal, State and local governments investing \$257,000 in the Powerful Pollinator Planting Guides program, with 21 guides published for bioregions in six states and territories and an additional 12 Guides under development.

# 40,000ha

**BEE FRIENDLY FARMING:** The Bee Friendly Farming program has 40,000ha of farmland certified, with the aim to grow this to 100,000ha in the next two years.

# 3,000

Approximately 3,000 students attended the 2023 Melbourne International Flower and Garden Show in March, most making a beeline for the popular When Bee Foundation stand.

# C4BE

**CENTRE FOR BEE EDUCATION:**

A new national learning hub for science-based information about bees and other pollinators was established as a collaboration between When Bee Foundation and Bee School by Beechworth Honey.

# Discover Bees

A new Discover Bees of Australia poster was launched in May to increase awareness of Australia's approximately 1,000 undocumented native bees, and help raise \$3.6 million to support scientists to identify and document these precious pollinators.

# \$25k

**LINTON BRIGGS ADVANCING**

**APICULTURE FUND:** \$25k investment so far, strengthening innovation and leadership skills, supporting industry leadership participation and building organisational effectiveness. In June 2022, 20 executives from Vic, SA and Qld beekeeping associations took part in the inaugural program.

# 13,700

More than 13,700 people visited the WBF and WBD websites during May, the biggest visitation month in the websites' histories.



## Powerful Pollinator Planting Guides

The Powerful Pollinators Planting Guide program has seen the creation of individual regional guides providing information on plant selection and management to increase the number and diversity of insect pollinators in farm and urban landscapes. When Bee Foundation has raised \$257,000 to produce 33 guides. There were 12 guides produced during 2023 including the first guide produced for the Northern Territory. These have been shared with land management groups, communities, farmers and gardeners in print and digital formats. Guides continue to be rolled out regularly and are available online. Inquiries from local councils are leading to the development of new guides.





## Bee Friendly Farming

When Bee Foundation has worked with US based sister charity the Pollinator Partnership to introduce the global Bee Friendly Farming program to Australia. The program supports farmers to protect, preserve and promote the health of bees and other pollinators on their land.

Funding for the program has been provided by Flow Hive, Australian Almonds and Equity Trustees, with in-kind support from the National Farmers' Federation, Rotarians for Bees and SGA.

The Bee Friendly Farming Program was represented during 2023 at The National Farmers' Federation Conference and The Almond Centre of Excellence Open Day. The almond industry has embraced the Bee Friendly Farming program, seeing the clear benefits in committing as an industry to support pollinators, and demonstrating this commitment to consumers.

In 2023, Bee Friendly Farming received a grant from the Australian Government's Future Drought Fund of \$460,000 to raise awareness of the benefits of Bee Friendly Farming and encourage positive practice change across pollinator-dependent agriculture sectors. This work has included sharing stories from Bee Friendly Farming certified farms such as Century Orchards in Loxton where technical manager Gemma understands the importance of protecting pollinators.

"Having a Bee Friendly Farming certification has ensured that we have something to show for improving our pollinator health and making sure that we are looking after our bees," Gemma said. "It's super important in that, we can also show to our beekeepers what we are doing and making sure that our bees are looked after and that this is a happy place for them to come."

As of 2023, 40,000 hectares of land has been certified across six states and 12 industries.

## Bee Friendly Farming Tree Grants

Through the Bee Friendly Farming Program, When Bee Foundation partnered with One Tree Planted and Flow Hive to establish the Bee Friendly Farming Tree Grants.

The first grants were awarded in 2021, with a second program running in 2022, providing grants between 1,000 and \$10,000 to farmers to plant pollinator friendly trees. Over the past three years, Bee Friendly Farming has awarded \$67,000 in grants to farmers who will collectively plant 115 hectares of pollinator-friendly habitat.

Plantings have continued in 2023, improving the ecosystem for feeding, nesting and breeding and in turn increased the number and diversity of insect pollinators in agriculture and urban landscapes.





## Carman's Trees for Bees Community Tree Grants

In May 2023, as part of World Bee Day celebrations, the When Bee Foundation launched its first Community Tree Grants – Carman's Trees for Bees, in partnership with Carman's. Grants of \$500 were given to 25 community organisations to plant pollinator-friendly trees and shrubs in their local area.

The grants went to community groups across six states, including schools, environmental groups, Landcare organisations, Rotary clubs, aged care centres, a childcare centre, a sports clubs, a Girl Guides group and a bee club.

Approximately 4,000 trees and shrubs were planted with the involvement of nearly 1,500 community members. These plantings increase vital habitat for bees, while also raising awareness of the important role these pollinators play in food security.

- Apollo Bay P-12 College
- Byron Youth Service
- Charleville School of Distance Education
- Coolamon Landcare
- Culgoa Development Group
- Girl Guides Victoria – Leongatha Guides
- Goodstart Early Learning – Nambour
- Gunnedah Urban Landcare Group
- Henry Doubleday Research Association of Australia – Hawkesbury EarthCare Centre
- Junior Science Academy
- Koroit and District Primary School
- Lakeland Senior High School
- Latrobe Valley Beekeepers Association
- Maleny State School
- Murray Haven Homes
- Our Lady of the Way Catholic Primary School
- Pasadena And St Marys Action Group
- Rotary Club of Forbes Ipomoea
- Scottsdale High School
- Stanthorpe United Redbacks FC
- Stella Life Care
- Tanjil Valley Landcare
- The Groundswell Collective
- Waroona District High School
- Warramunda Villages



# Centre for Bee Education

The Centre for Bee Education was launched in May 2023, a new national online learning hub for science-based information about bees and other pollinators, developed in collaboration between When Bee Foundation and Bee School by Beechworth Honey. Through the Centre for Bee Education, educators and students can access learning resources, information sheets and lesson plans for hassle-free and engaging learning that fosters a lifelong passion for bees.

All Bee Education Learning Kits and resources are linked to the Australian Curriculum and the Victorian Curriculum, making them easy for teachers to integrate into classroom learning. The first Bee Education Learning Kit is Planting for Bees! and looks at the relationship between honey bees and their environment.



# World Bee Day

In 2019, When Bee Foundation became the custodian of World Bee Day in Australia and has grown engagement with the celebration year on year. Since then, 145 official events have been hosted online.

For the past three years, the Foundation has partnered with the Australian Farmers' Markets Association to increase awareness among market visitors through the We Need Bees campaign and the Bring Your Buzz campaigns. Markets across the country rolled out messaging to thousands of visitors.

In 2023, celebrations were kicked off with a message from When Bee Foundation Patron His Excellency General the Honourable AC DSC (Retd) Governor General David Hurley. Events were held by community organisations across the country and included market stalls, craft sessions, bee hotel building, information sessions and webinars.



# Australian Pollinator Week

Australian Pollinator Week was founded by Dr Megan Halcroft in November 2015 to acknowledge Australia's important and unique insect pollinators during our southern spring. In 2019, When Bee Foundation became custodian of Australian Pollinator Week to increase awareness of bees and other wild pollinators in the Australian landscape. Since then, 124 official events have been hosted online.

Australian Pollinator Week has become a highlight on the calendar for these often unrecognised yet vital contributors to our food systems and environment.

In 2023, celebrations took place across the country and included Pollinator Picnics, Wild Pollinator Counts and webinars featuring discussions by bee experts.



## Pollinator Photography Competition

A stunning image of a dronefly in a gardenia, captured by photographer Paul Harrop from Queensland, took out the top prize at this year's Pollinator Photography Competition.

Competition judges said this photo was chosen as the winner due to its originality and technical mastery, beating more than 500 entries from every state and territory, in what has become a hotly contested photography competition and a highlight of the Australian Pollinator Week calendar.

Entries reflected the diversity of Australian pollinators, with pictures of native bees and honey bees, as well as other important pollinators including flies, wasps, butterflies, beetles and bugs. The prize pool totaled \$5,000, with the first place photo receiving \$1,500 and a NiSi Quick Adjustment Macro Focusing Rail valued at \$349, thanks to iWoohoo Beekeeping, NiSi Australia, Rotarians for Bees, Bee Friendly Farming and the When Bee Foundation.

There was a separate category for school students, with the best picture from a secondary school student and a primary school student winning a Bee Education Learning Kit and bee-themed incursion for their school, courtesy of the Centre for Bee Education, a collaboration between Bee School by Beechworth Honey and the When Bee Foundation.

Benjamin Morris from Chairo Christian School won the Primary School division with his vibrant photo of a honey bee on a bottlebrush. The Secondary School division was won by Miranda Howard for her superbly composed photo of a hoverfly on a flower.

The winners were announced at the Discover Bees through Photography webinar, held during Australian Pollinator Week, and hosted by some of the country's best pollinator photographers.

### Photos above (left to right):

Open 2nd Place — An Oriental Broad-nosed Weevil by Phil Smith, NT.

Open 3rd Place — Hibiscus Bound by Lea Brooks, SA.

Open Special Mention — Australian Native Bee by Dominic Deligny, Qld.

**Top right:** Open Winner — Dronefly in Gardenia Thunbergia Flower by Paul Harrop, Qld.

**2023 POLLINATOR  
PHOTOGRAPHY  
COMPETITION**



## Australian Pollinator Count

The annual Australian Pollinator Count is a long-term project to monitor the status and trends of pollinator populations. This includes more than 2,000 species of bees, along with thousands of species of flies, butterflies, moths, wasps, beetles and other insects.

The count was launched in 2022 and encourages citizen scientists across the country to take part by heading outside, taking 10 minutes to record the pollinators they see in their local area and registering their results online.

Collecting this data helps build an understanding of the number and diversity of pollinating insects in the environment. Learning resources, including an online learner guide and quiz, were produced to help participants prepare for the count by learning to identify native pollinator species and pre-validating all information to ensure a quality dataset with scientific rigour.

## Australian Pollinator Count:





# Discover Bees

When Bee Foundation has launched a Fund to support an ambitious campaign by Taxonomy Australia to discover and describe all remaining Australian native bee species over the next six years. To date, 1,680 bees have been identified and taxonomists estimate another 1,000 bees are yet to be discovered. Documenting the remaining bee species will require

a 16-fold increase in the current rate of discovery, at a cost of \$600,000 per year for six years, totalling \$3.6 million.

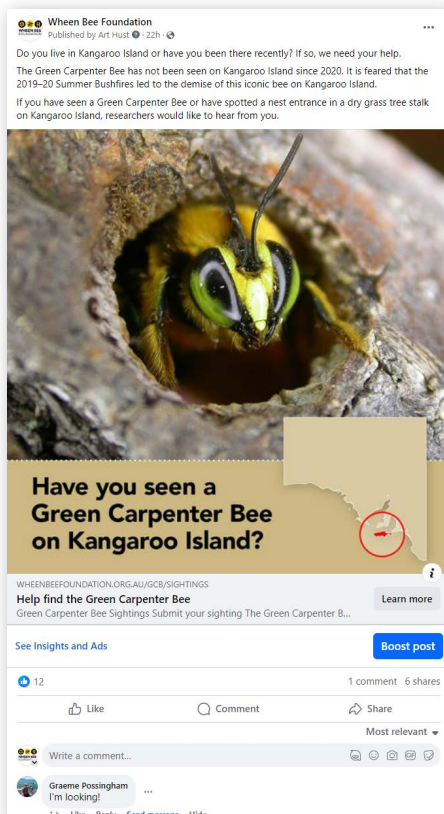
In May 2023, the When Bee Foundation launched the Discover Bees of Australia poster with photography by James Dorey, to increase awareness of Australia's native bees and help raise funds for this important project.



# Green Carpenter Bee

The Green Carpenter Bee Conservation Project is an initiative of the When Bee Foundation to support the development of artificial nesting substrates produced by Kingscote Men's Shed on Kangaroo Island. The group has so far produced 500 nesting substrates for the endangered Green Carpenter Bee, with support from ANZ Foundation for Rural and Regional Renewal, Flow and Seacology. The project has. The focus of this project has recently expanded due to the impacts of the catastrophic 2020 bushfires.

In August 2023, the When Bee Foundation ran a campaign to support the search for Green Carpenter Bees on Kangaroo Island in response to the devastating loss of bee habitat. The campaign included information flyers distributed across Kangaroo Island and a social media campaign calling for people to register any sighting of the Green Carpenter Bee. The campaign ads reached 13,821 people and were seen 92,389 times. Two Green Carpenter Bee active nests have been discovered on Kangaroo Island following the campaign and ongoing work by researchers.



## 5Bees

The 5Bees program supports commercial beekeepers to recover from bushfire and drought. Established in 2020 through the When Bee Foundation's Bushfire Rebuild and Recovery Fund, with support from AustOn, Anthony Costa Foundation and Beechworth Honey, the program helps beekeepers adapt to a changing climate and increasing incidents of severe weather conditions including drought, bushfire and floods.

Grants of up to \$8,500 support beekeepers to implement new technology and systems that will increase hive production and performance, decrease production costs and enhance business viability.

The 5Bees program manager has brought together 15 commercial beekeepers from five states (WA, NSW, SA, Vic, Qld). Current trials include hive cameras for remote monitoring, scales on hives for remote monitoring of honey production, bee venom collection and an integrated record keeping system for enhanced biosecurity and business decision-making capabilities.



## Pollination Security CRC



## CRC for Pollination Security

Over the past two years, the When Bee Foundation has taken a pivotal role in the bid for a Pollination Security Cooperative Research Centre.

The Foundation is acting as the lead organisation to support the Core Bid Group, which is made up of representatives from industries and businesses dependent on pollinating insects, research and development organisations, universities, state government departments, and other sector stakeholders.

By October 2023, the Core Bid Group had attracted an unprecedented 55 partners, who together committed \$60 million in cash and kind to the Pollination Security CRC. The When Bee Foundation committed \$1.1 million over 10 years.

The Bid requested an additional \$40 million in support from the Federal Government.

In July 2023, the Core Bid Group's Stage 1 submission was approved, and the Bid moved to Stage 2, which required another Bid submission in August and an interview with the CRC Advisory Committee. A team of eight represented the Core Bid Group, attending the panel interview in October 2023. Representatives included Pollination Security CRC Bid CEO JP Scheerlinck, Pollination Security CRC Bid Chair Dr Anne Astin, When Bee Foundation CEO Fiona Chambers, Fenner School of Environment and Society, ANU, Director Professor Saul Cunningham, Almond Board of Australia Chairman Peter Hayes, Plant Health Australia CEO Sarah Corcoran, When Bee Foundation Director Jodie Goldsworthy and Hort Innovation Chair Julie Bird.

In December, the CRC Advisory Committee announced its decision not to fund the PS CRC in this round.

The Core Bid Group will decide on next steps in 2024, including reapplying in Round 25 in 2024, or Round 26 in 2025.

## Linton Briggs Advancing Apiculture Fund

When Bee Foundation established the Linton Briggs Advancing Apiculture Program to honour the legacy of Linton Briggs' dedication to the Australian beekeeping industry.

The program is dedicated to strengthening innovation and leadership skills in the beekeeping industry, supporting industry leadership participation and building organisational effectiveness.

In June 2022, 20 executives from three state beekeeping associations – Victoria, South Australia and Queensland – participated in the inaugural Linton Briggs Board Effectiveness Program.



# The When Bee Foundation Research Apiary

The When Bee Foundation Research Apiary is located at North Richmond in the Hawkesbury region of New South Wales on the property that was once the home of the Foundation's benefactor, Gretchen When.

The Research Apiary is a fully funded resource available to researchers and organisations to study pests, diseases and other issues that affect bees. The findings improve our scientific understanding of bees and help tailor best practice management strategies to improve bee health and welfare.

The Research Apiary has 20 hives and allows researchers to test various management interventions in a practical field environment, under controlled conditions. In 2022, the research Apiary was used by the University of Sydney who provided funding to equip fourteen of the hives with monitors.



## Plan Bee

The Plan Bee program uses innovative breeding technologies to help secure Australia's honey bee population and transform their performance. Through research, partnerships and education the project generates gains for beekeepers in honey production and improve productivity and profitability for primary producers in pollination-dependent industries.

The When Bee Foundation is a core partner in the project which is run by AgriFutures, with funding and support from NSW Department of Primary Industries, University of Sydney, Better Bees (WA), Olam, Costa Group, South Pacific Seeds, Beechworth Honey, Monson's Honey and Pollination and other commercial beekeepers. So far, the project has \$3.7 million invested over three years, with 42 per cent of this co-investment raised through When Bee Foundation bringing partners to the table.

## Conferences and Shows

In 2023, When Bee Foundation collaborated with the Victorian Schools Garden Program to bring an immersive and interactive display to the Melbourne International Flower and Garden Show. The When Bee Foundation display was in the Bug and Bloom Garden, a dedicated area for school groups and young families.

The display included a live hive demonstration, a native bee habitat display, a Flow hive display, Powerful Pollinator Planting Guides and information about Bee Friendly Farming and the Centre for Bee Education. Volunteers from the Bee Ambassador program and Rotarians for Bees and teachers from Bee School by Beechworth Honey were on hand to answer questions about bees, pollinator-friendly gardening and When Bee Foundation programs.

The show took place over five days and 108,500 people attended. Approximately 1,000 students were booked each day from Wednesday to Friday.

The When Bee Foundation attended several other conferences and shows including 2023 HortConnections, Almond Centre of Excellence Open Day and The National Farmers' Federation 2023 National Conference.





© Adli Wahid

# About the When Bee Foundation

The When Bee Foundation is an Australian registered not-for-profit charity that promotes awareness of the importance of bees and raises funds for research that addresses the national and global threats to bees.

We engage with all levels of government, the apiculture industry, bee reliant food industries, universities, research organisations and community. We fund vital strategic research, education and conservation initiatives that strengthen bees, improve pollination efficiency and increase food security, biodiversity and ecosystem health.



---

## Our Patron



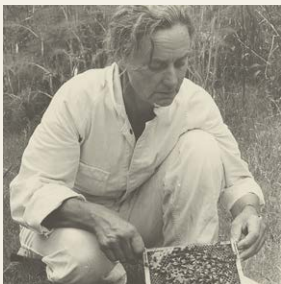
**His Excellency General the Honourable David Hurley AC DSC (Retd)**

As both Governor-General of the Commonwealth of Australia and a keen apiarist and amateur beekeeper, His Excellency General the Honourable David Hurley AC DSC (Retd) is delighted to be the Patron of The Wheen Bee Foundation.

As Patron of The Wheen Bee Foundation, David Hurley enjoys supporting Wheen Bee Foundation's valuable work and spending time with the dedicated staff, volunteers and supporters.

---

## Our Founder



**Gretchen Wheen**

Gretchen Wheen was one of Australia's best-known beekeepers. She was one of the first suppliers of quality queen bees to Australian and international commercial beekeepers and a pioneer in instrumental insemination of queen bees.

Gretchen donated much of her estate to establish the Wheen Bee Foundation, with the aim of supporting and developing research, innovation, training and communication to ensure a viable beekeeping industry to protect Australia's food supply.

## Our CEO



**Fiona Chambers**

Fiona Chambers has 30 years' experience as a commercial farmer, agricultural consultant, lecturer in Farm Business Management, Leadership Development and Marketing.

Fiona has undertaken Churchill and ISS international study Fellowships related to agricultural industry development (2003, 2010) and is a Fellow of the Williamson Community Leadership Program (1995).

She has been CEO since October 2016.

---

## Our Board



**Dr Max Whitten AM**  
Foundation Chairman

Max Whitten (BA, BSc, PhD, FAA, AM) is an Adjunct Professor, School of Biological Sciences, University of Queensland. He was formerly Chief of CSIRO Entomology and Professor of Genetics at the University of Melbourne.

Max was the first Chairman of the Honeybee Research and Development Council. His research interests centred around genetic means of controlling insect pests and the ecological genetics of pesticide resistance. His wider interests have been in public good research, sustainable agriculture and biodiversity.

Max is a founding Director, serving on the When Bee Foundation Board since August 2009.

---



**Jodie Goldsworthy**

Jodie Goldsworthy (BAppSci, Grad Dip Strat Mkting) is a fourth-generation apiarist and Director of Beechworth Honey, one of Australia's largest independently owned specialist honey businesses. Jodie is determined to increase public awareness about the importance of bees and is a keen advocate for research into the threats to nature's most efficient pollinators.

Jodie joined the When Bee Foundation Board in June 2010.

---



**Robert Costa**

Robert Costa is a co-founder of Costa Group, Australia's largest grower, marketer and exporter of fresh fruit and vegetables. His knowledge of the commercial aspects of the horticultural industry and strong business acumen played a significant role in building the Costa business into the success that it is today.

Robert joined the When Bee Foundation Board in May 2016.

---



**Des Cannon**

Des was a commercial beekeeper for 25 years and Editor of Australia's leading beekeeping journal, The Australasian Beekeeper, for 14 years. His science teacher background and decade of teaching 'Beginning in Bees' and 'Beekeeping as a Business' for NSW DPI played a role in his appointment to the RIRDC Honeybee R&D Advisory Committee for 11 years, including 5 years as Chair.

Des joined the When Bee Foundation Board in February 2018.



**Rex Carruthers**

Rex Carruthers is a commercial beekeeper from Cooroy, northern Sunshine Coast hinterland, Qld. Rex operates an apiary of 2000 colonies with his main business focus being the pollination of almonds in Victoria. Rex has been a member of the Queensland Beekeepers' Association (QBA) for 25 years, and was on the state executive for 9 years, three as state President.

Rex joined the Wheen Bee Foundation Board in July 2021.



**Dr Diana Leemon**

Diana Leemon (BSc, DipEd, Grad Dip Biotech, M Appl Sc, PhD) is a research scientist formerly with AgriScience Queensland within the Qld Department of Agriculture and Fisheries (QDAF). She is currently a member of the Qld Beekeepers' Association management committee and has just completed two terms on the AgriFutures Honey Bee and Pollination industry advisory panel, where she served as acting chair and deputy chair during her last term.

Diana joined the Wheen Bee Foundation Board in August 2023.



**Peter Knoblanche**

Peter has nearly 40 years' experience in both wholesale and retail banking, having held positions with various Australian and international banks. Since joining Rabobank in 1996, in keeping with Rabobank's being the leading global food and agribusiness lender, he has been closely involved in the agriculture and agribusiness sector across Australia, New Zealand as well as globally.

Peter joined the Wheen Bee Foundation Board in August 2023.



**Tom Simmons**

Originally from Meningie in South Australia, Tom Simmons grew up on a small property in a farming community. He has worked on broadacre cropping properties, a 14,000 head cattle feedlot, a northern grass-fed cattle operation, a thoroughbred stud and a large Western District sheep and cattle property. He has also spent time on conservation projects in the Amazon Jungle in Peru, before completing a Bachelor of Business degree (Agriculture) at Marcus Oldham College.

Tom joined the Wheen Bee Foundation Board in November 2023.



## Contact details

### General information

[info@whenbeefoundation.org.au](mailto:info@whenbeefoundation.org.au)




### Business Buddies and Sponsorship

[programs@whenbeefoundation.org.au](mailto:programs@whenbeefoundation.org.au)

### Media

[hello@whenbeefoundation.org.au](mailto:hello@whenbeefoundation.org.au)

### Follow us

-  [WhenBeeFoundation](#)
-  [whenbeefoundation](#)
-  [WhenBee](#)

---

[WhenBeeFoundation.org.au](https://www.whenbeefoundation.org.au)



**WHEN BEE**  
FOUNDATION